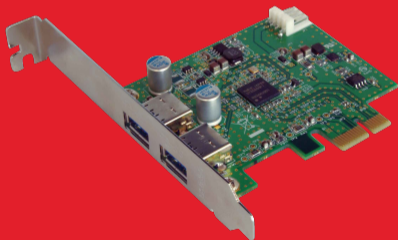


USB 3.0 PCI-e Card

User Manual



SHUSB3PCIE
shintaro.com.au



USB 3.0 PCI-e Card

Contents

Copyright Information.....	4
Precaution.....	5
General Information.....	6
Product Layout.....	7
Hardware Installation.....	8
Driver Installation.....	9
Product Specifications.....	11

Copyright Notice

This document is copyrighted. The information provided in this document has been carefully checked for accuracy at the time of publication. No representations or warranties, either expressed or implied, with respect to the contents hereof and specifically disclaims any warranties, merchantability or fitness for any particular purpose.

Any software described in this manual is sold or licensed “as is”. Should the programs prove defective following their purchase, the buyer assumes the entire cost of all necessary servicing, repair, and any incidental or consequential damages resulting from any defect in the software.

The manufacturer reserves the right to revise this publication and to make changes from time to time in the contents hereof without obligation to notify any person of such revision or changes.

No part of this publication may be reproduced, stored in a retrieval system, or transmitted in any form of or via any means without the prior written permission of the manufacturer.

Trademark Acknowledgement

All brand, company and product names used for identification in this document are trademarks or registered trademarks of their respective companies.

© Copyright 2009, Version 1.0

All rights reserved.

Printed in Taiwan

Important Precaution

Before getting started, read these instructions and save them for later reference.

1. Before connecting the Express card to the laptop, read through this user's guide. In some operating systems, the drive software must be installed prior to operation.
2. Do not insert with strong force, as doing so may severely damage the product.
3. Be careful not to injure yourself by catching your fingers when loading the SHUSB3PCIE or USB devices.
4. Do not disassemble or modify the product in any way. Disassembly or modification may not only void warranty but could cause damage or lead to fire or electric shock.
5. Do not use or store the product in damp locations or under high temperature.
6. Liquid entering the product also may cause damage or lead to fire or electric shock.

General Information

Thank you for purchasing SHUSB3PCIE 2 ports USB3.0 PCI Express adapter. Super-Speed USB3.0 interface provides a reliable solution for PCs, consumer electronics and communications devices.

SHUSB3PCIE is a dual-port USB3.0 PCI Express adapter, and it can transfer data up to 5.0Gbps when connecting to USB 3.0 compliant peripherals, or with existing USB peripheral devices. It also supports backward compatible with USB2.0 High-Speed and USB1.1 Full-Speed device. It is an ideal technology for external storage devices, digital cameras, webcams, scanners, and many more.

Key Features

- Compliant spec. to USB3.0 Rev. 1.0.
- Compliant spec. to Intel xHCI Rev 0.96
- Compliant spec. to PCI Express 2.0 interface.
- Compliant spec. to PCI Express Generation 2 spec.
- Support Super-Speed data transfer rate up to 5.0Gbps.
- Provide USB3.0 interface compatible with prior ubiquitous USB2.0 standard.
- More power at the connector, Max. 900mA.
- Built-in 4-pin power connector for receiving extra power supply from system.
- Support standard PCI Express slot.
- Support hot swapping and Plug-and Play capability.

System Requirements

A PC mainboard with a PCI Express slot

Package Contents

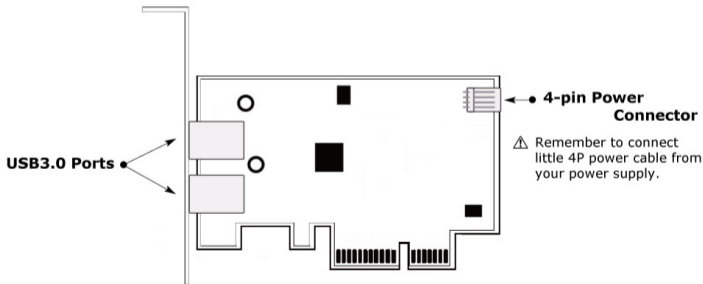
USB PCIe Card

Low profile bracket

Driver Disk

Product Layout

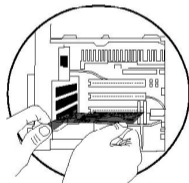
Below is a sample picture describing the general location of external USB3.0 ports. However, minor differences will occur, depending on the model.



Hardware Installation

Warning:

- Touch the exposed metal casing on your computer's power supply before you taking the card from its antistatic package. This safely discharges any static electricity that may have built up on your body.
 - Handle the card by the PCB edge only. Avoid touching the gold-plated bus or any electronic components.
1. Turn your computer off and disconnect the power cord before installing the host card.
 2. Remove your computer's cover. (Please refer to your computer owners manual for instructions on removing the cover)
 3. Locate an available PCI Express expansion slot and remove the bracket cover.
 4. Insert the card carefully into a free PCI Express slot and make sure the gold-plated bus is seated evenly in the PCI Express slot.
 5. Fasten the PCI Express card's mounting bracket securely to the rear computer case by screw, to avoid it accidentally falling out when plugging in the external USB device.
 6. Connect 4P power cable from the power supply to SHUSB3PCIE.
 7. Before replacing your computer's cover, you must make sure no tools or screws are left inside your computer case.
 8. Reconnect AC power cord and turn the power on, to complete the driver software installation.



Driver Installation

Before you start to use SHUSB3PCIE, please install the driver first (Windows XP/VISTA/7)

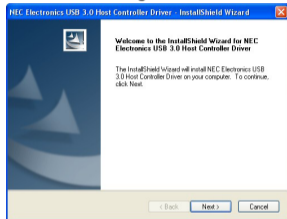
1. Insert program disc into the CD-ROM/DVD-ROM drive.
2. Click SHUSB3PCIE



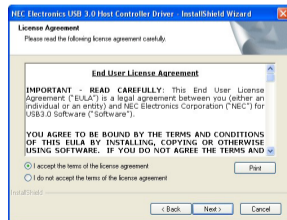
3. Click Windows Driver to install



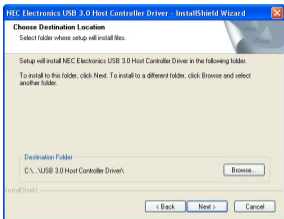
4. Click Next to go on



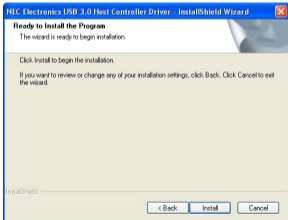
5. Select "I accept the terms of the license agreement" and click Next begin install



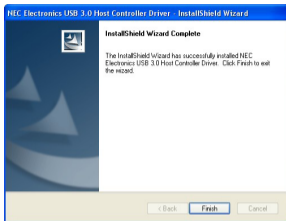
1. Click Next to continue



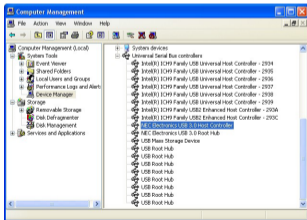
2. Click Install to begin the installation



3. Click Finish to complete the process



4. And you can find USB3.0 Host Controller in device management



Product Specifications

Specifications	
USB3.0 Host Controller	NEC uPD720200
Max. Data Transfer Rate	5.0Gbps
I/F to PC	PCI Express2.0 x 1
External Port	2 USB ports (Support Super-Speed/ High-Speed/Full-Speed/Low-Speed)
Power Input	4-pin power connector
Power Output	DC +5V/ Max. 900mA
System Support	Windows XP / VISTA / 7 (32/64bit)
Dimension	80 x 68.5 x 1.6 mm (L x W x H)
Operating Temperature	0°C~40°C
Storage Temperature	-20°C~60°C
Operating Humidity	0%~80% RH, non-condensing
Certification	FCC Class B, CE

* Specifications are subject to revision or update without notice



support@shintaro.com.au